

"CURVE DATA"

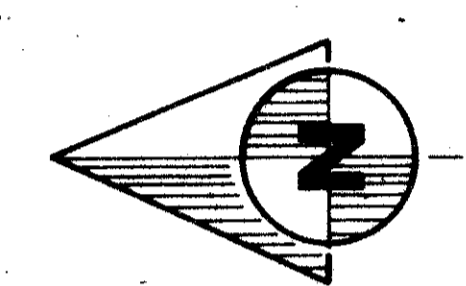
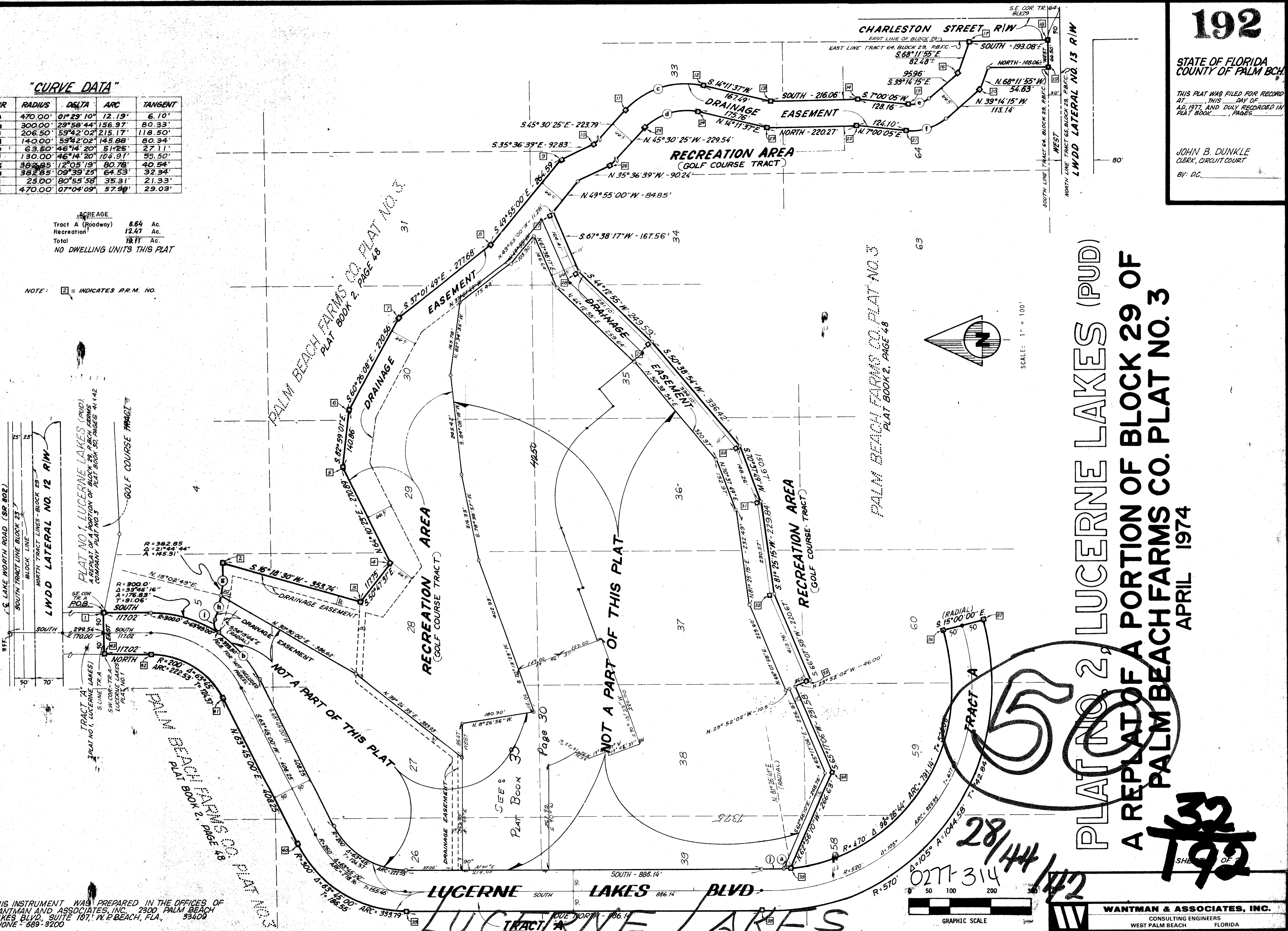
R	RADIUS	DELTA	ARC	TANGENT
470.00	01°29'10"	12.19'	6.10'	
300.00	29°58'44"	156.97'	80.33'	
206.50	59°42'02"	215.17'	118.50'	
140.00	59°42'02"	145.88'	80.34'	
63.50	46°14'20"	51.25'	27.11'	
130.00	46°14'20"	104.91'	55.50'	
382.85	12°05'19"	80.78'	40.54'	
382.85	09°39'25"	64.53'	32.34'	
25.00	80°55'58"	35.31'	21.33'	
470.00	07°04'09"	57.98'	29.03'	

ACREAGE

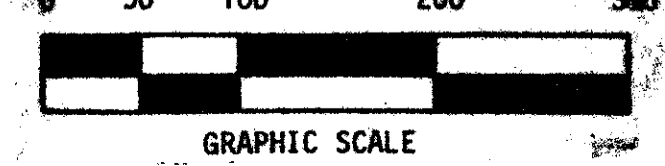
Tract A (Roadway)	6.64	Ac.
Recreation	12.47	Ac.
Total	19.11	Ac.

NO DWELLING UNITS THIS PLAT

NOTE: [] = INDICATES P.R.M. NO.



SCALE: 1" = 100'



PLAT NO. 2, LUCERNE LAKES (PUD)
A REPLAT OF A PORTION OF BLOCK 29 OF
PALM BEACH FARMS CO. PLAT NO. 3
APRIL 1974

WANTMAN & ASSOCIATES, INC.
 CONSULTING ENGINEERS
 WEST PALM BEACH, FLORIDA

THIS INSTRUMENT WAS PREPARED IN THE OFFICES OF
 WANTMAN AND ASSOCIATES, INC., 2300 PALM BEACH
 BLVD., SUITE 107, WEST PALM BEACH, FLA. 33409
 PHONE - 689-3200

28/44
 0277-314
 192